

## Using Flickr.com in Google Earth Projects

Flickr.com is a photo-sharing Web site. It contains over 2.17 billion photographs, many of which can be used in Google Earth files. But not all images can be used-some users of the site place restrictions on how others use their photography. For example, some individuals “stamp” their photography with an “all rights reserved” license-which means you cannot use the photograph without asking for permission first. However, some photographers are more user-friendly and will allow you to use their photography without asking, provided that you cite your use to their Flickr screen name. This licensing is called Creative Commons licensing.

1. Access the Flickr Creative Commons page at:  
(<http://www.flickr.com/creativecommons>)
2. Four different licensing categories are available and **two are appropriate** for student digital storytelling projects: **Attribution, and Attribution-Non Commercial**. Both of these licenses allow use to use the photographers imagery as long as you credit your use to their Flickr screen name.
3. To search the Attribution and Attribution-Non Commercial pools of photography, click on the See More next to the number of images. This will enable you to access the search page for that particular Creative Commons license.

Flickr: Creative Commons - Microsoft Internet Explorer

File Edit View Favorites Tools Help

Back Forward Stop Home Search Favorites RSS Feeds Print Mail News Groups

Address <http://www.flickr.com/creativecommons> Go Links SnagIt

flickr.com You aren't signed in Sign In Help

Home Learn More Sign Up! Explore

Search everyone's photos Search

### Creative Commons

Many Flickr users have chosen to protect their work with a Creative Commons license, and you can browse or search through photos under each type of license.

Here are some recently licensed photos:

**BY: Attribution License**

From Franklin From c21rooney From c21rooney From ToralJRU From Lordcolus

**Click here** » 2,545,001 photos (See more)

**creative commons**

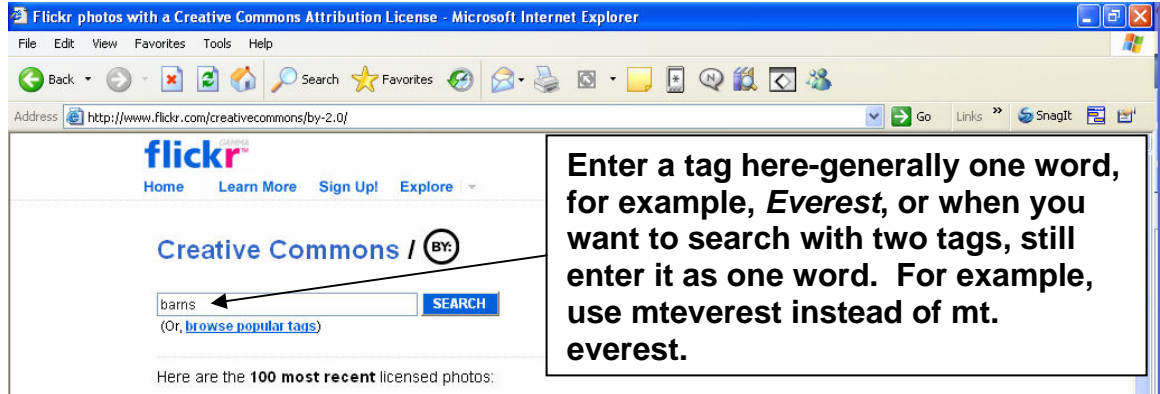
"Creative Commons is a non-profit that offers an alternative to full copyright."  
[creativecommons.org](http://creativecommons.org)

**Briefly...**

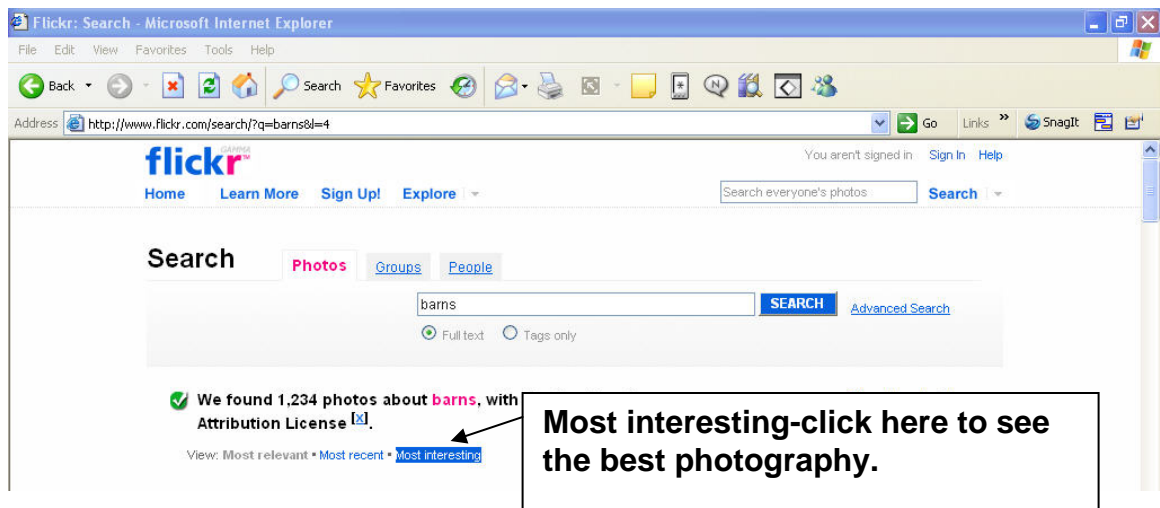
**Attribution means:** You let others copy, distribute, display, and perform your copyrighted work - and derivative works based upon it - but only if they give you credit.

**BY:**

4. Enter your search terms into the search box.



5. Once the search has returned, click on *Most Interesting*-it contains the best photography.



6. Find the image you want and click on it. The photo opens. Under the name of the photo, and in the upper left corner, you will see a *magnifying glass with all sizes*. Click on that icon.



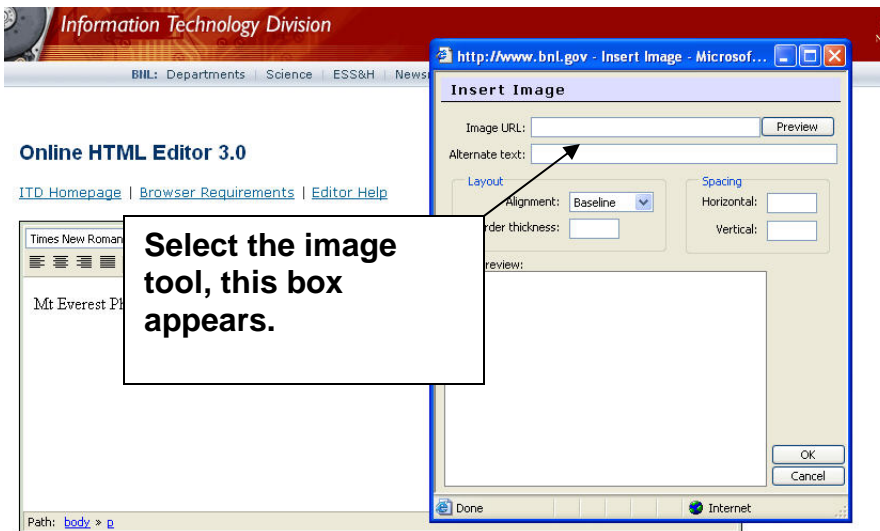
7. A larger photo will open with a range of available photo sizes. The best photo size for Google Earth projects is the small size (240X180).
8. Be sure to record the Flickr photographer's name. This name will be used to properly cite the photographer in your Google Earth project.
9. Right-click on the image, select properties, and highlight and copy the address.

Note: the remaining instructions assume that students are using an online HTML editor, such as the editor available from Brookhaven National Laboratory (<http://www.bnl.gov/itd/htmleditor/apps/>).

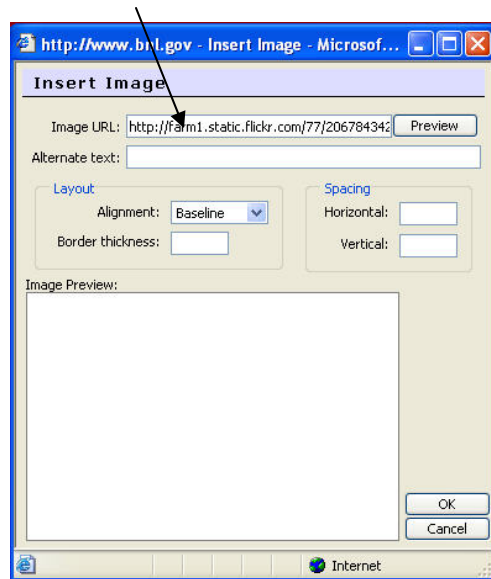
*For a tutorial on how to construct the HTML code necessary to build content in a Google Earth placemark, please see:*

<http://www.jakesonline.org/earth.htm>

10. Go to the HTML editor insert the cursor where you want the file to be. Select the image tool:



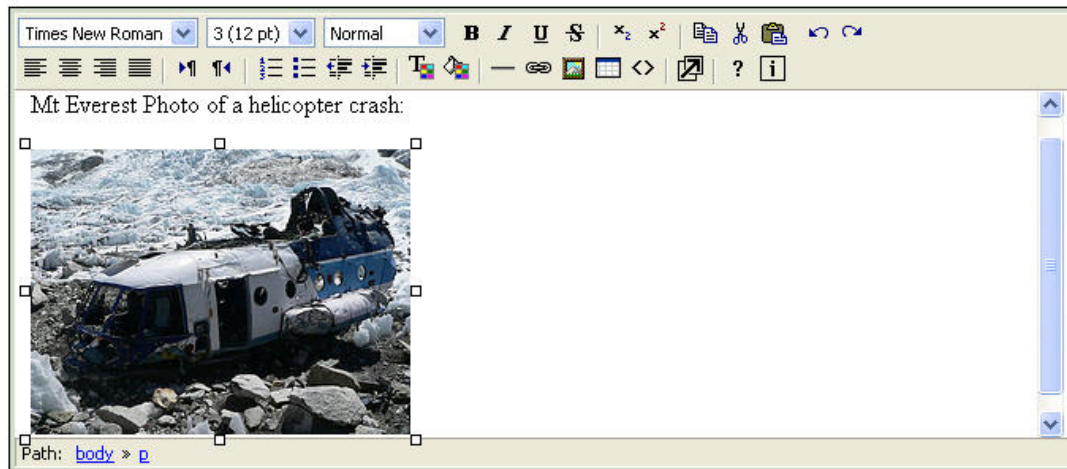
11. Paste the address in the **Image URL** window: Click OK.



12. The image now appears in the window of the HTML editor.

### Online HTML Editor 3.0

[ITD Homepage](#) | [Browser Requirements](#) | [Editor Help](#)



#### Grabbing Your Code

13. Using the HTML toggle button, open the HTML code. Copy the code and paste it into the Google Earth placemark window. The first tutorial explains this process in detail.

*Tutorial Notes: this tutorial is designed for Google Earth 4.2 operating on a PC platform.*

*This work is licensed under the Creative Commons Attribution-Noncommercial-No Derivative Works 3.0 United States License. To view a copy of this license, visit <http://creativecommons.org/licenses/by-nc-nd/3.0/us/> or send a letter to Creative Commons, 171 Second Street, Suite 300, San Francisco, California, 94105, USA.*

*This tutorial created by David Jakes*

Contact David at [dsjakes@gmail.com](mailto:dsjakes@gmail.com)

Visit [The Strength of Weak Ties](#)